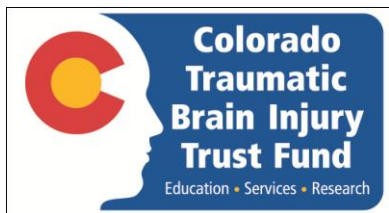


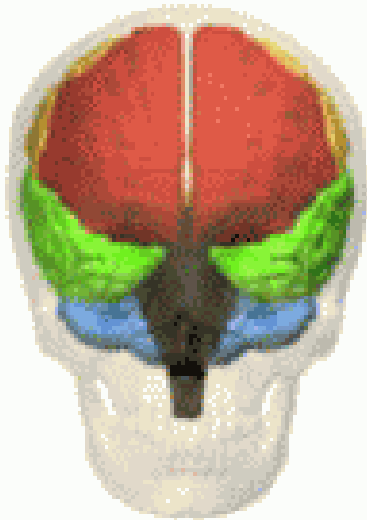
Brain Injury Alliance of Colorado

**Statewide non-profit dedicated to improving quality of life for
individuals with brain injuries**

Liz Gerdeman, MA
Outreach Director
Liz@biacolorado.org
303.355.9969

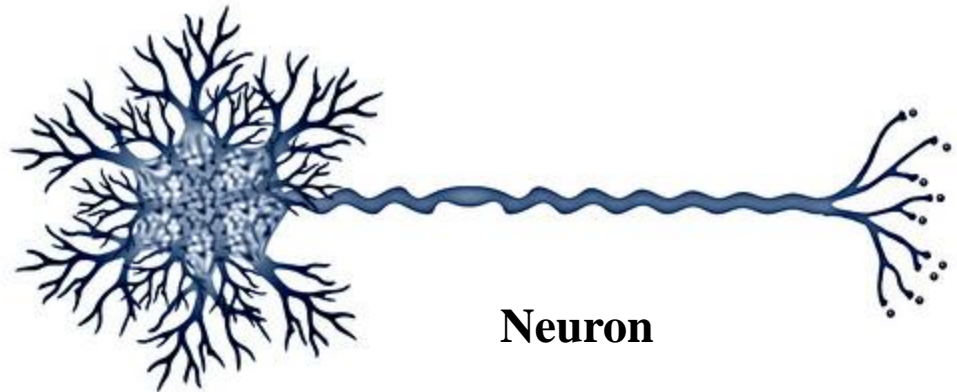


Brain Structure



- **Frontal**
- **Parietal**
- **Temporal**

- **Occipital**
- **Cerebellum**



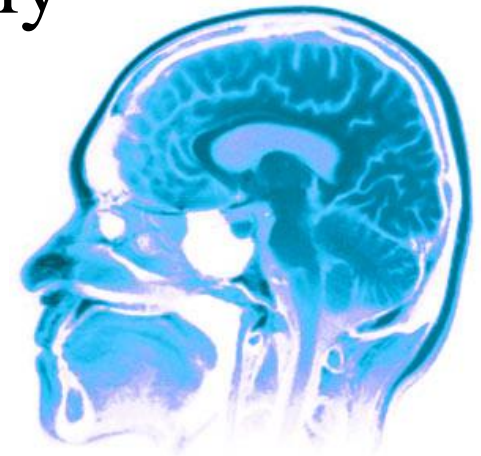
Brain Injury 101

Acquired Brain Injuries (ABIs)

- **“Non-traumatic”** such as stroke, infection, tumor, hypoxia, damage from substance abuse, etc.
- **“Traumatic” (TBIs)** - caused by a bump, blow or jolt to the head (may or may not penetrate) that disrupts the normal function of the brain.

Approximately **1.7 million** people sustain a traumatic brain injury annually

- 52,000 die
- 275,000 are hospitalized
- 1.4 million are treated and released

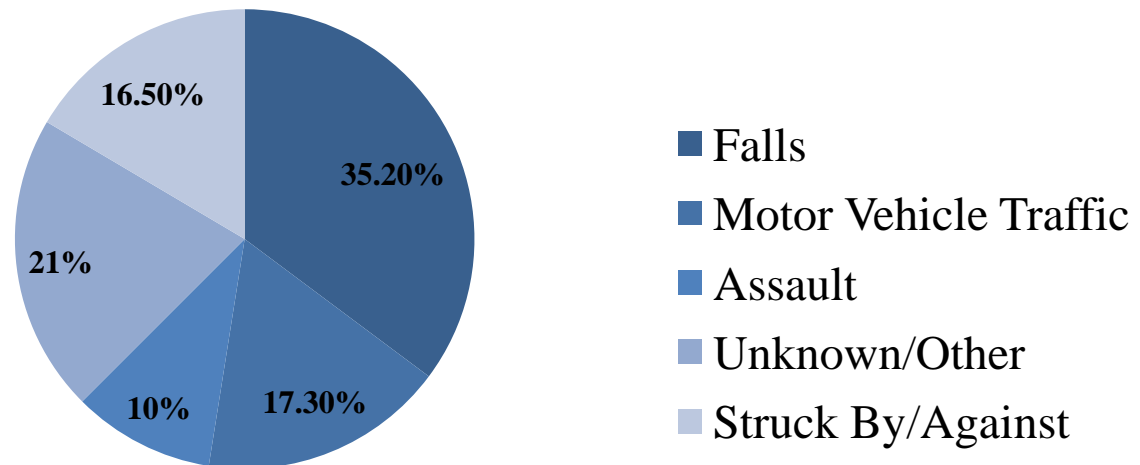


An estimated **6 million+** Americans currently live with disabilities resulting from a brain injury

Source: Centers for Disease Control and Prevention

TBI Statistics

- Children **0 to 4 years**, older adolescents aged **15 to 19** years, and adults **65 years+** are most at risk
- Males are almost **twice** as likely to sustain a TBI as females
- **Falls** are the leading cause of TBIs in the United States (globally, motor vehicle accidents are #1)



Classification of Severity

	Glasgow Coma Scale	Post-Traumatic Amnesia	Loss of Consciousness
Mild	13-15	<1 day	0-30 minutes
Moderate	9-12	>1 day to <7 days	>30 minutes to <24 hours
Severe	3-8	>7 days	>24 hours

Diagnoses

- Self Report
- Medical Documentation
 - Hospital record
 - Note from a provider
- Neurodiagnostic Assessments
 - University of Denver's PPC
 - Validity Test included



Tower of Hanoi

Signs and Symptoms

Thinking/ Remembering	Difficulty thinking clearly	Feeling slowed down	Difficulty concentrating	Difficulty remember new information
Physical	Headache Fuzzy or blurry vision	Nausea or vomiting (early on) Dizziness	Sensitivity to noise or light Balance problems	Feeling tired, having no energy
Emotional/ Mood	Irritability	Sadness	More emotional	Nervousness or anxiety
Sleep	Sleeping more than usual	Sleeping less than usual	Trouble falling asleep	Difficulty maintaining deep sleep

Characteristics

Dependent upon location and severity of injury

The three commonly affected areas are:

- Memory
- Visual-spatial
- Organization

In addition:

- Deficits in Executive Functioning
- Unpredictable recovery, unusual profiles, and inconsistency in behavior
- Decreased self-awareness, denial of deficits



Behavioral Outcomes

Dependent upon location and severity of injury

Keep in mind: some responses are related to the restrictions in life after the injury or are a consequence of the *distress associated with a disability*

- Irritability/Agitation (overstimulation)
- Frustration
- Aggressive Behavior
 - Anger Outbursts
 - Short Temper
- Apathy
- Withdrawal/Social Isolation
- Emotional Lability
- Impulsivity
- Hyperactivity
- Social Disinhibition/Inappropriate Behavior
- Lack of Awareness of Deficits

Victimization

What factors make a person with a traumatic brain injury susceptible to victimization?

Relationship Factors

- Difficulty with anger management
- Misperceptions about TBI
- Dependency on caregiver

Individual Factors

- Cognitive problems
- At-risk behaviors
- Potential for risky sexual engagement



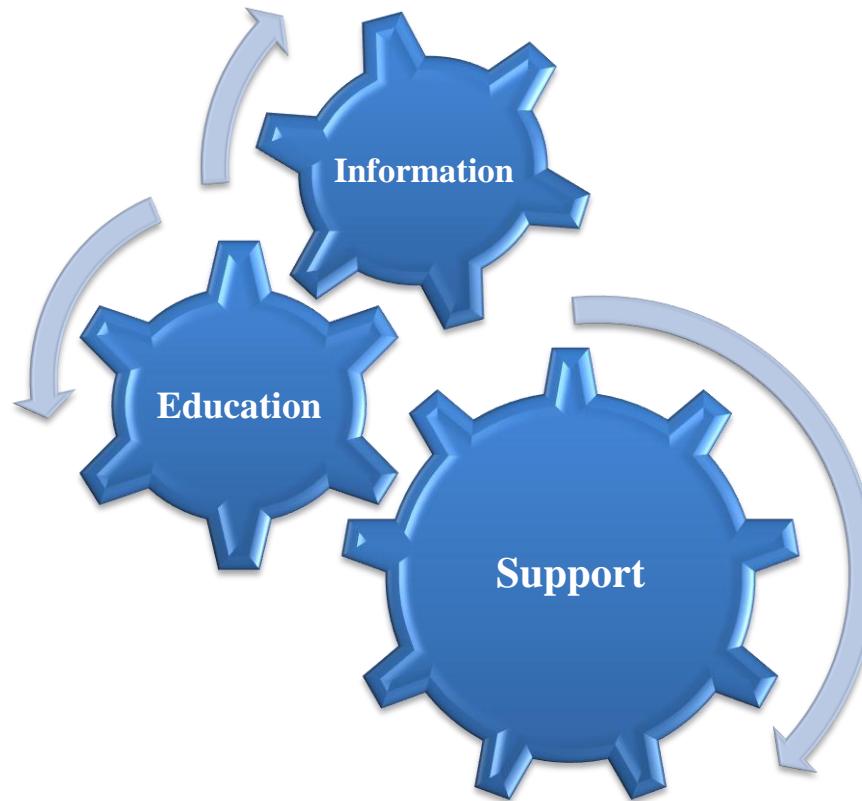
Recommended Treatment Considerations

- Certified Brain Injury Specialist (CBIS)
- Assistive Technologies
- Consistency
- Multiple mediums of communication
- Focus on organization, routines, schedules
- Set reasonable, attainable goals
- Social skills! Group therapy and/or Support Groups



iPhone App: "It's Done!"

Brain Injury Alliance of Colorado



30th Annual Conference
October 11-12, 2012
Conference
Brain Injury Alliance of Colorado

Colorado Traumatic Brain Injury Trust Fund

Education • Services • Research

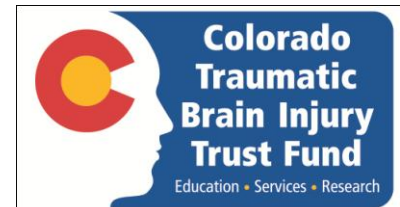
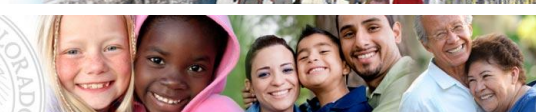
- Statewide Care Coordination and Services for children and adults with brain injuries
 - Adult Program: TBI specific; Purchased Services
 - Kids Program: ABIs; Funding toward “Safety Net”



Colorado Department
of Public Health
and Environment



cdhs
Colorado Department
of Human Services
people who help people





**Thank you for your time!
Questions? Comments?
Feedback?**

Please see our website for more information:

BIAColorado.org